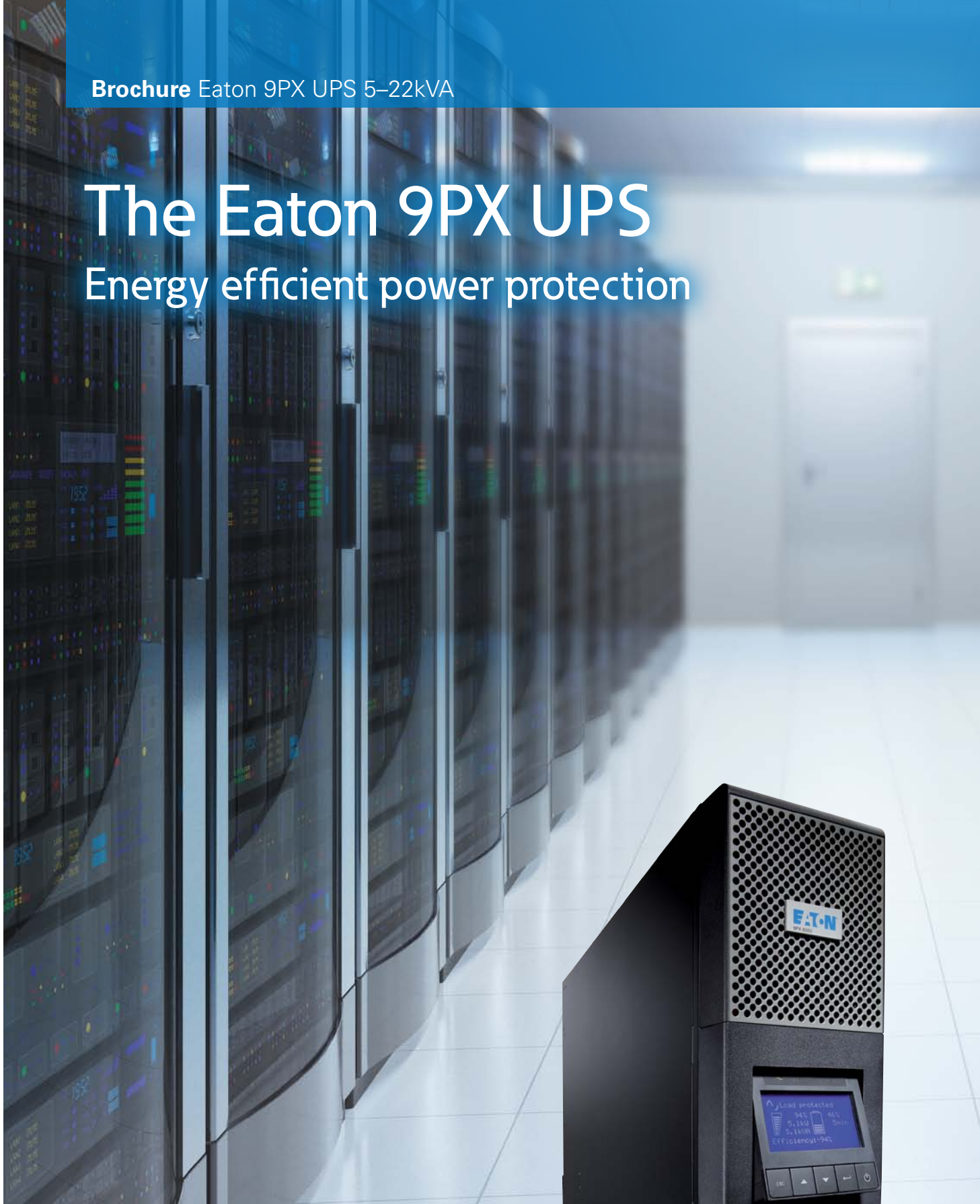


Brochure Eaton 9PX UPS 5–22kVA

The Eaton 9PX UPS

Energy efficient power protection



EATON

Powering Business Worldwide

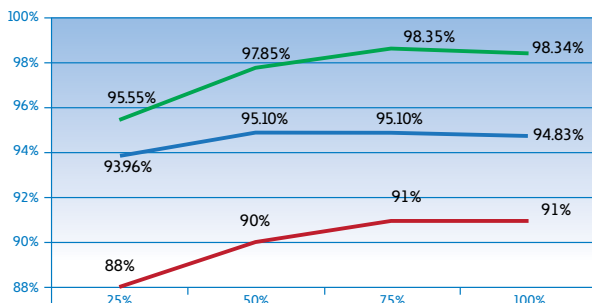
Performance and efficiency come together in the Eaton 9PX UPS.

As an industry professional, and because of rising energy costs and the business need for energy-efficient performance, you'll be looking for ways to reduce costs and consumption. The Eaton 9PX UPS enables you to secure all your mission-critical applications, giving you the reductions in energy usage and costs you need.

Eaton 9PX UPS key benefits.

- Constantly monitors power conditions and regulating voltage and frequency
- Up to **95% efficiency** in online double conversion mode and 98% in high-efficiency mode
- 0.9 power factor delivers **28% more power** than any UPS in its class
- Compact rack/tower versatile form factor, delivering up to **5400W in only 3U** and **10kW in only 6U**

Essentially, the Eaton 9PX UPS gives you the chance to optimise power density and minimise capital and operating expenditure, along with the assurance that, should the power go down, critical processes will be maintained in your IT infrastructures and other applications.



- 9PX 11kVA HE Mode
- 9PX 11kVA Online Mode
- Legacy UPS



9PX 1:1 is an Energy Star® qualified UPS.

Features that set the Eaton 9PX UPS apart.

- **New graphical LCD display** provides clear information on the UPS's status and measurements on a single screen which tilts 45° for ease-of-viewing
- **Metering energy consumption** – kWh values can be monitored using the LCD or our own Intelligent Power® Software
- **Availability and flexibility** – The internal bypass allows service continuity in case of internal fault, a maintenance bypass is also available for easy replacement of the UPS without powering down critical systems
- **Paralleling functionality** to achieve twice the power of unitary products using HotSync technology
- **Load segment control** enables prioritised shutdowns of nonessential equipment to maximise battery runtime for critical devices (5 and 6kVA 1:1 UPS)
- **Serial, USB and relay connectivity**, plus an extra slot for an optional communication card
- **Intelligent Power® Software** compatible with all major OS including virtualisation software such as VMware and Hyper-V is included with each UPS
- **Eaton ABM® battery management** technology for longer battery life
- Plus, add more runtime with up to **12 external hot-swappable battery modules**, able to run systems for hours if necessary



Eaton 9PX UPS can easily be used as a rack or a tower model.

Eaton innovating for more than 50 years.

Eaton has been safeguarding the critical systems of businesses across the globe for over half a century. Whether protecting a single desktop or the largest datacentre, Eaton solutions provide clean, uninterrupted power to keep mission-critical applications working.

We offer a comprehensive range of environmentally-sensitive, efficient, reliable UPSs, surge protective devices, power distribution units (PDUs), remote monitoring, meters, software, connectivity, enclosures, airflow management and professional services.



As the ultimate protection for your IT equipment, the Eaton 9PX UPS also integrates seamlessly into all major virtual environments including VMWare, Hyper-V, Citrix XenServer, RedHat KVM. With Eaton you are sure to benefit from the best of virtualisation technology.

To find out more, please visit

www.eaton.eu/9PX



9PX LCD tilts 45° for ease-of-viewing.

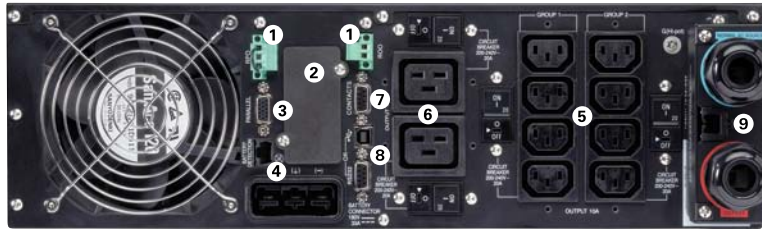


9PX 11kVA with maintenance bypass.



Eaton 9PX UPS Technical Specifications

- 1 Remote Off/On and Remote Power Off connectors
- 2 Slot for Network-MS, ModBus-MS or Relay-MS cards
- 3 Parallel operation port (DB15)
- 4 External battery module (EBM) connector with automatic detection (RJ11)



- 5 8 IEC 10A sockets (2 groups of 4 manageable sockets) with cable retention system
- 6 2 IEC 16A sockets with cable retention system
- 7 DB 9 with output contacts
- 8 USB and serial ports
- 9 Input/Output connection

Eaton 9PX 6kVA 1:1

Technical Specifications	5kVA 1:1	6kVA 1:1	6kVA 3:1	8kVA 1:1 or 3:1	11kVA 1:1 or 3:1		
Rating (kVA/kW)	5kVA/4.5kW	6kVA/5.4kW	6kVA/5.4kW	8kVA/7.2kW	11kVA/10kW		
Electrical Characteristics							
Technology	On-line double conversion with Power Factor Correction (PFC) system						
Input voltage	200/208/220/230/240V 1:1		200/208/220/230/240V/250V 1:1, 380/400/415 3:1				
Input voltage range	176-276V without derating (up to 100-276V with derating) 1:1, 305V-480V without derating (up to 175V-480V with derating) 3:1						
Output voltage/THDU	200/208/220/230/240V +/- 1%; THDU <2%						
Input frequency range/THDI	40-70Hz, 50/60Hz autoselection, frequency converter as standard, THDI < 5%						
Efficiency	Up to 94% in Online mode, 98% in Hi-Efficiency mode			Up to 95% in Online mode, 98% in Hi-Efficiency mode			
Short circuit current	90A	90A	90A	120A	150A		
Overload capacity	102-110% : 120s, 110-125%: 60s, 125-150%: 10s, >150%: 500ms		102-110% : 120s, 110-125%: 60s, 125-150%: 10s, >150%: 900ms				
Connections							
Input	Terminal block (up to 10 mm ²)		Terminal block (up to 16mm ²)				
Outputs	Terminal block + 2 controlled groups of 4 IEC C13 (10A) + 2 IEC C19 (16A)		Terminal block				
Outputs with HotSwap Maintenance Bypass	Terminal block + 3 IEC C13 (10A) + 2 IEC C19 (16A)		Terminal block+4IECC19(16A)				
Batteries							
Typical backup times at 50 and 70% load*							
9PX	13/10 min	11/8 min	30/20min	20/15 min	13/9min		
9PX + 1 EBM	60/40 min	48/34 min	70/45min	48/32 min	32/21 min		
9PX + 4 EBM	220/150 min	170/120 min	210/140 min	140/100 min	100/70 min		
Battery management	ABM and Temperature compensated charging method (user selectable), automatic battery test, deep discharge protection, automatic recognition of external battery units.						
Communication							
Communication ports	1 USB port, 1 RS232 serial port (USB and RS232 ports cannot be used simultaneously), 4 dry contacts (DB9), 1 mini terminal block for remote On/Off and 1 for remote power Off, 1 DB15 for parallel operation.						
Communication slot	1 slot for Network-MS card (included in Netpack versions), ModBus-MS or Relay-MS cards.						
Operating conditions, standards and approvals							
Operating temperature	0 to 40°C continuous						
Noise level	<45dB	<45dB	<48db	<48db	<50db		
Safety	IEC/EN 62040-1, UL 1778 (1:1 version)						
EMC, performance	IEC/EN 62040 -2, FCC Class A (1:1 version), IEC/EN 62040-3 (Performance)						
Approvals	CE, CB report (TUV), UL (1:1 version)						
Dimensions H x W x D/Weight							
UPS dimensions	440(19")*130(3U)*685mm	440(19")*130(3U)*685mm	440(19")*260(3U+3U)*700mm	440(19")*260(3U+3U)*700mm	440(19")*260(3U+3U)*700mm		
UPS weight	48kg	48kg	88kg	84kg (1:1), 88kg (3:1)	86kg (1:1), 88kg (3:1)		
EBM dimensions	440(19")*130(3U)*645mm	440(19")*130(3U)*645mm	440(19")*130(3U)*680mm	440(19")*130(3U)*680mm	440(19")*130(3U)*680mm		
EBM weight	68kg	68kg	65kg	65kg	65kg		
Power module dimensions	-	-	440(19")*130(3U)*700mm	440(19")*130(3U)*700mm	440(19")*130(3U)*700mm		
Power module weight	-	-	23kg	19kg (1:1), 23kg (3:1)	21kg (1:1), 23kg (3:1)		
Customer Service and Support							
Warranty	2 years warranty						
* Runtimes are shown at 0.7 power factor. Backup times are approximate and may vary with equipment, configuration, battery age, temperature, etc							
Parts Numbers							
UPS with HotSwap Maintenance Bypass	9PX5KiBP	9PX6KiBP	9PX8KiBP	9PX11KiBP	9PX6KiBP31	9PX8KiBP31	9PX11KiBP31
UPS with Network Card and Rack Kit	9PX5KiRTN	9PX6KiRTN	-	-	-	-	-
UPS with HotSwap MBP, Network Card and Rack Kits	-	-	9PX8KiRTNBP	9PX11KiRTNBP	9PX6KiRTNBP31	9PX8KiRTNBP31	9PX11KiRTNBP31
EBM	9PXEBM180	9PXEBM180	9PXEBM240	9PXEBM240	9PXEBM240	9PXEBM240	9PXEBM240
Power Module	-	-	9PX8KiPM	9PX11KiPM	9PX6KiPM31	9PX8KiPM31	9PX11KiPM31
HotSwap Maintenance Bypass	MBP6Ki	MBP6Ki	MBP11Ki	MBP11Ki	MBP11Ki31	MBP11Ki31	MBP11Ki31
9PX ModularEasy (paralleling kit)	9PXMEZ6Ki	9PXMEZ6Ki	9PXMEZ11Ki	9PXMEZ11Ki	-	-	-
Supercharger with Rack Kit	-	-	SC240RT	SC240RT	SC240RT	SC240RT	SC240RT
1.8m Battery Connection Cable	EBMCBL180	EBMCBL180	EBMCBL240	EBMCBL240	EBMCBL240	EBMCBL240	EBMCBL240
Accessories	Rack kit: 9RK, Transformer (Single Phase): TFM11Ki, Battery Integration System: BINTSYS						
9PX Parallel*							
	9PX 10kVA 1:1 (5kVA redundant)	9PX 12kVA 1:1 (6kVA redundant)	9PX 16kVA 1:1 (8kVA redundant)	9PX 22kVA 1:1 (11kVA redundant)			
	9PXM10KiRTN	9PXM12KiRTN	9PXM16KiRTN	9PXM22KiRTN			

*9PX Parallel system includes 2 x 9PX, ModularEasy (Parallel kit), rail kits and network cards